

Emergency Candle

from *The Crochet Works*
of Sally V. George

When there's a power failure at your house, does everyone go scrambling and digging thru drawers and closets searching for the flashlight? Well—here is a pretty solution! This attractive candle actually covers an empty can which very neatly holds a flashlight! How clever! How handy! And how nice to add so lovely a convenience to your decor!

Then—think what terrific gift canisters these would be! Filled with cookies or fudge? Yummmmm!

Materials: Acrylic 4-ply knitting weight yarn, 2 oz gold or color of choice for candlestick, 1½ oz color of choice for candle, few yards yellow for flame; empty Pringles can with lid; yarn needle; flashlight.

Hook: G

Gauge: 4 sc = 1 inch; 4 rows sc = 1 inch

CANDLESTICK

Starting at top center, ch 36, *being careful not to twist ch*, join with sl st to make circle, ch 1.

★**NOTE:** When working rounds in sc that are joined with a sl st, I always work the first sc into the same sc that is sl st'd into (also called the joining st). That way, all the sl sts line up on top of ea other and are not counted, nor worked into.

Rnd 1: (sc in ea of next 3 ch, 2 sc in next ch) 9 times, join with sl st, ch 1. (45 sc)

Rnd 2: (sc in ea of next 4 sc, 2 sc in next sc) 9 times, *completing top of drip lip*, join, ch 1. (54 sc)

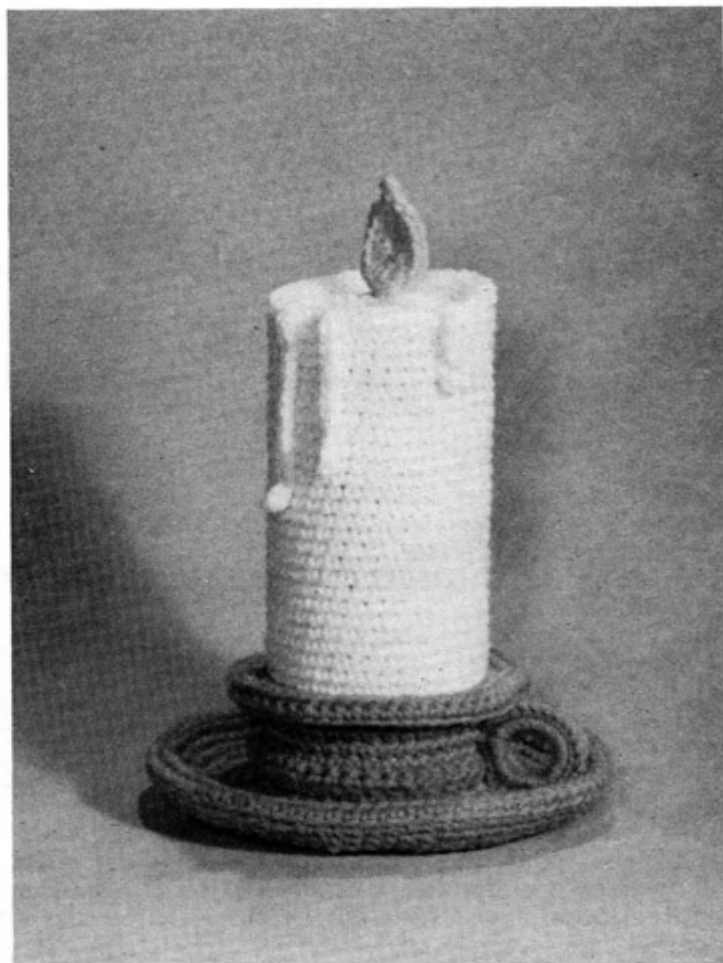
Rnd 3: *working in back loops only*, sc in ea sc, *making edge of lip*, join, ch 1. (54 sc)

Rnd 4: *working in back loops only*, (sc in ea of next 5 sc, sk next sc) 9 times, join, ch 1. (45 sc)

Rnd 5: (sc in ea of next 4 sc, sk next sc) 9 times, *completing underside of lip*, join, ch 1. (36 sc)

Rnd 6: *working in front loops only*, sc in ea sc, join, ch 1. (36 sc)

Next 3 Rnds - 7 thru 9: sc in ea sc, join, ch 1. (36 sc)



Rnd 10: *turn; working in back loops only*, sc in sl st and ea of next 4 sc, 2 sc in next sc, (sc in ea of next 5 sc, 2 sc in next sc) 5 times, join, ch 1. (42 sc)

Rnd 11: (sc in ea of next 5 sc, dec next 2 sc) 6 times, join, ch 1. (36 sc)

Rnd 12: *turn*. Insert hook in back loop of sl st. Take a moment now to look inside the tube and locate the free loops left unworked on Rnd 10. Push your hook on down so it slips under the first free loop of Rnd 10, which is a sl st also (check on the outside of your work to be sure you have the right stitch); yo, draw a loop thru first 2 loops on hook, yo and thru last 2 loops, *completing sc*. Continuing in this manner, *working in back loops only of two rnds as one*, sc in ea of next 35 sc, join, ch 1. (36 sc)

Rnd 13: sc in ea sc, join, ch 1. (36 sc)

Rnd 14 - beginning saucer: *working in front loops only*, (sc in ea of next 5 sc, 2 sc in next sc) 6 times, join, ch 1. (42 sc)

Rnd 15: sc in ea of next 3 sc, 2 sc in next sc, (sc in ea of next 6 sc, 2 sc in next sc) 5 times, sc in ea of last 3 sc, join, ch 1. (48 sc)

Rnd 16: (sc in ea of next 5 sc, 2 sc in next sc) 8 times, join, ch 1. (56 sc)

Rnd 17: sc in ea of next 3 sc, 2 sc in next sc, (sc in ea of next 6 sc, 2 sc in next sc) 7 times, sc in ea of last 3 sc, join, ch 1. (64 sc)

Rnd 18: (sc in ea of next 7 sc, 2 sc in next sc) 8

times, join, ch 1. (72 sc)

Rnd 19: sc in ea sc, join, ch 1. (72 sc)

Rnd 20: sc in ea of next 4 sc, 2 sc in next sc, (sc in ea of next 8 sc, 2 sc in next sc) 7 times, sc in ea of last 4 sc, join, ch 1. (80 sc)

Rnd 21: sc in ea sc, completing top of saucer, join, ch 1. (80 sc)

Rnd 22: working in back loops only, sc in ea sc, making edge of saucer, join, ch 1. (80 sc)

Rnd 23: working in back loops only, sc in ea sc, join, ch 1. (80 sc)

Rnd 24: sc in ea sc, join, ch 1. (80 sc)

Rnd 25: sc in ea of next 5 sc, sk next sc, (sc in ea of next 9 sc, sk next sc) 7 times, sc in ea of last 4 sc, join, ch 1. (72 sc)

Rnd 26: (sc in ea of next 8 sc, sk next sc) 8 times, join, ch 1. (64 sc)

Rnd 27: sc in ea of next 4 sc, sk next sc, (sc in ea of next 7 sc, sk next sc) 7 times, sc in ea of next 3 sc, join, ch 1. (56 sc)

Rnd 28: (sc in ea of next 6 sc, sk next sc) 8 times, join, ch 1. (48 sc)

Rnd 29: sc in ea of next 3 sc, sk next sc, (sc in ea of next 7 sc, sk next sc) 5 times, sc in ea of last 4 sc, join, ch 1. (42 sc)

Rnd 30: (sc in ea of next 6 sc, sk next sc) 6 times, join, ch 1. (36 sc)

Rnd 31: sc in ea sc, completing underside of saucer, join. (36 sc) End off leaving 12" yarn for sewing. Press underside of saucer close up under the top of saucer and sew Rnd 31 to the inside of the tube, taking needle under back loops only of Rnd 31 and the free loops only of Rnd 14. Do not sew the top lip together yet.

HANDLE: Make 2 rings in the following manner: ch 8, join with sl st to form ring, ch 1; work 23 sc into ring, pushing sts close together, completely covering the ch, join. End off. Place rings back to back; working thru both pieces as one and placing hook under both loops of ea sc, sl st in ea sc around, join. End off leaving 8" yarn for sewing. Place ring in saucer so it covers the joining sts made at ends of the rnds. Sew edges of ring to the side of the candlestick and along the curve of the saucer as shown in photo.

CANDLE

Lift the top lip up and outward, folding it down around the outside of the candlestick. This will allow you to see the free loops left unworked on Rnd 6. Holding outside of piece towards you, insert hook under back loop of the sl-st-to-join on this rnd (Rnd 6), draw thru a loop of color chosen for candle and ch 1.

Rnd 1: sc in ea free loop around. (36 sc) Do not join with a sl st but work in a continuous spiral, marking the beg of ea rnd with a contrasting color strand of yarn which you carry up ea rnd.

Next 27 Rnds - thru 28: sc in ea sc.

Rnd 29: sc in ea of next 5 sc, sl st in next sc, ch 1, turn, leaving rest of rnd unworked.

Rnd 30: sk sl st, sc in ea of next 21 sc, sl st in ea of next 5 sc, ch 16, 3 sc in 2nd ch from hook, sl st back up the ch, making first drip of wax, sl st in

same sc where ch began, sl st in ea of next 2 sc, ch 12, 3 sc in 2nd ch from hook, sl st back up the ch, making 2nd drip, sl st in same sc where ch began and ea of next 5 sc, ch 8, 3 sc in 2nd ch from hook, sl st back up the ch, making 3rd drip, sl st in same sc where ch began, sl st in ea of next 2 sc, and join with sl st in ch-1. End off. Split a matching strand of 4-ply yarn to get two 2-ply strands. Use these to tack drips to sides of candle.

CANDLE FLAME: with yellow, ch 7; 2 sc in 2nd ch from hook, hdc in ea of next 3 ch, sc in next ch, sl st in last ch, ch 2, sl st in 2nd ch from hook; working along opposite side of ch, lay beginning tail of yarn on top of ch and work over it; sl st in first ch, sc in next ch, hdc in next ch, 2 dc in next ch, dc in next ch, work both 1 hdc and 1 sc in last ch, join to first sc. End off leaving 6" yarn for sewing.

CANDLETOP: starting at center, with color used for candle, ch 2.

Rnd 1: 6 sc in 2nd ch from hook. Do not join with sl st but work in a continuous spiral marking ea rnd with a strand of contrasting color yarn.

Rnd 2: 2 sc in ea sc. (12 sc)

Rnd 3: (2 sc in next sc, sc in next sc) 6 times. (18 sc)

Rnd 4: (2 sc in next sc, sc in ea of next 2 sc) 6 times. (24 sc)

Rnd 5: (2 sc in next sc, sc in ea of next 3 sc) 6 times. (30 sc)

Rnd 6: (2 sc in next sc, sc in ea of next 4 sc) 6 times. (36 sc)

End off leaving 15" yarn for sewing.

ASSEMBLY: Place flame in center of candletop and sew securely. Place candletop on open top of candle so flat edge of flame faces the drips. Sew edges together taking needle under one loop only of each piece. Untwist strand of 4-ply yarn in color of candlestick to get two 2-ply strands. Pull drip lip back up to its original position at base of candle. Flatten top and underside of lip together. Sew 2 pieces together taking needle up and down thru both layers with easy stitches running along inside edge close to candle. Do not pull sts too tightly or you'll have "pit" marks.

Turn Pringles can upside down. Slip candle and candlestick over can so lid of can is at bottom of candlestick. Take off lid—insert flashlight—replace lid. Shape edges of saucer with fingers so they curve up evenly all around. Place with pride in convenient spot in living room. Now—how about one for "your bedroom?"

Have fun,
Sally V. George
1987

Abbreviations

beg	beginning	pat	pattern
ch	chain	rnd	round
dc	double crochet	sc	single crochet
dec (s)	decrease (s)	sk	skip
dtr	double treble crochet	sl st (s)	slip stitch (es)
dec'ng	decreasing	sp (s)	space (s)
ea	each	st (s)	stitch (es)
hdc	half double crochet	thru	through
inc (s)	increase (s)	tog	together
inc'ng	increasing	tr	treble crochet
lp (s)	loop (s)	yo	yarn over hook